

Kiosk Solution W1000

All product names mentioned in this document are the trademarks, brands or registered trademarks of their respective owner.

Copyright © Wincor Nixdorf International GmbH, 2015

All rights reserved, especially for translation, reprint, reproduction by copying or similar processes, (in whole or part). Violations shall give rise to damages.

All rights reserved, especially in the event of the awarding of a patent or utility model registration.
Subject to availability and technical modifications.

Contents

General Information.....	1
Document Information.....	1
Tool List.....	1
About This Manual	1
Beginning the Installation.....	1
Pillar Mounting	2
View	2
Scope of Delivery	2
List of Enclosed Accessories	3
Additionally for Ceiling Connection	3
Preparation.....	4
Attach the Pillars and Ground Plate	5
Attach Pillar/Ground Plate to the Floor Plate	7
Cable Connections for Floor Cabling	9
Fastening Points on the Housing.....	9
Attach Kiosk System	10
Attach Cable Duct.....	13
Ceiling Cabling	15
Cabling for the North American Market.....	15
Wall Mounting	22
Assembly in the Wall	22
Dimensions	22
Installation	24
Assembly on the Wall	27
Dimensions (in mm).....	27
Installation	29
Cabling Europe	32
Block Diagram.....	33

General Information

Document Information

This manual is intended for the installation team on-site. It serves as a basis for the execution/processing of the installation of one/multiple kiosk system(s) W1000.

Tool List

In addition to the standard tools, the following tools are required to setup the kiosk system W1000:

- Hammer drill with stone drill 8, 2 mm
- Hacksaw to cut cable duct pipe to length
- Allen wrench 8 mm (for the pillar mounting)

About This Manual



Notifications in this manual are marked by this symbol.



This symbol is used to bring notifications to your attention.

Beginning the Installation

The device will be delivered in a box: 1100 mm x 78mm x 500 mm.
Weight: Device ca.48 kg, Base plate ca. 80 kg, Pillar ca. 25 kg.



A 16A fuse complying with **IEC60127** (breaking capacity of 1500A) must be part of the building installation.

All devices should be checked for damage in advance. Please immediately report any possible damage to the person in charge of the installation.

Store the unpackaged devices so that they cannot be damaged.



Be careful during transport so that moving parts such as the front hood and other parts are not bent.

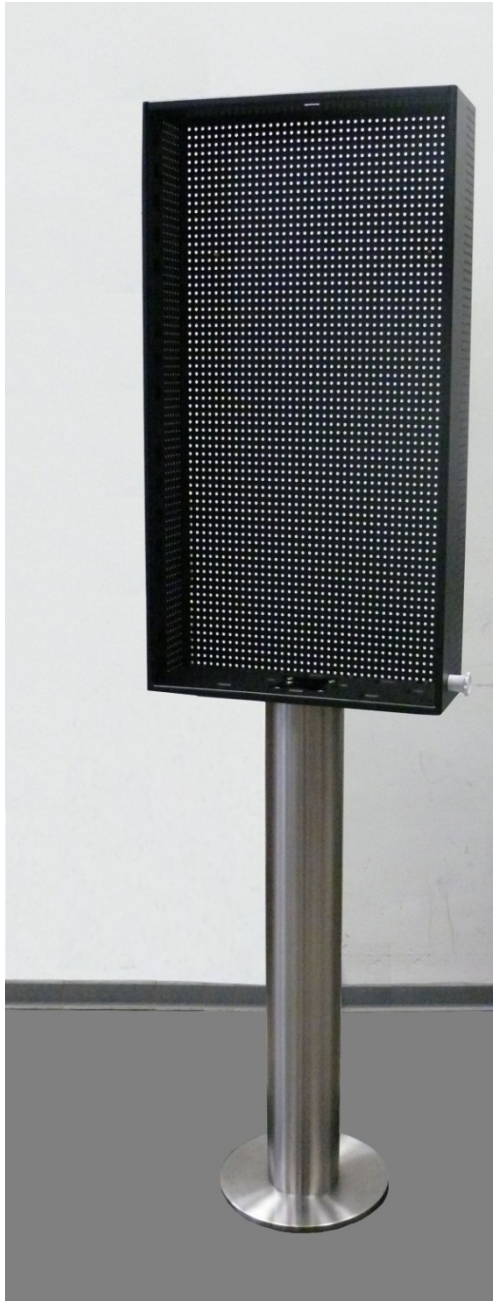


Be careful with the stainless steel components.

- First inspect the setup situation on-site.
- Is the installation location reasonable?
- Are all cables present? 2 LAN cables and one electrical socket?
- Make sure to wear **safety shoes** with class 1 toe cap acc. to ASTM F 2412 and ANSI Z41.1 in their current versions (USA) and acc. to Canada protection CSA code 1Pxxx (Canada).

Pillar Mounting

View



Scope of Delivery

Pillar with ground plate
Stainless steel pipe
Stainless steel cover plate
Housing 19"/22"
Cable duct pipe

List of Enclosed Accessories



6	Dowel (12 mm drill hole / 70 mm deep)
6	Countersunk head screws 10 mm
3	Torx screws M4
4	Self-securing screws M8
2	Hexagon serrated flange nuts M6 for threaded pins
2	Distance washers for threaded pins
1	Silicon glue

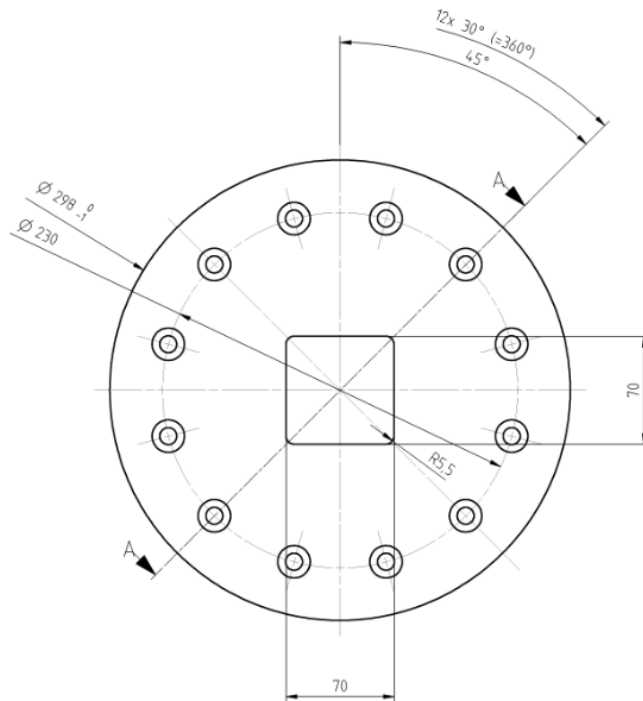
Additionally for Ceiling Connection



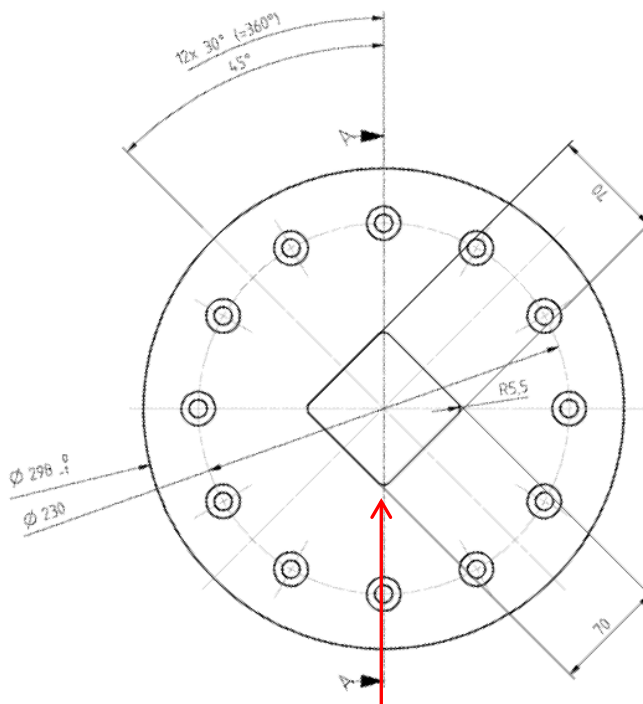
3	Hex-head cap screws M4
1	Retaining bracket for ceiling connection
1	White rosette

Preparation

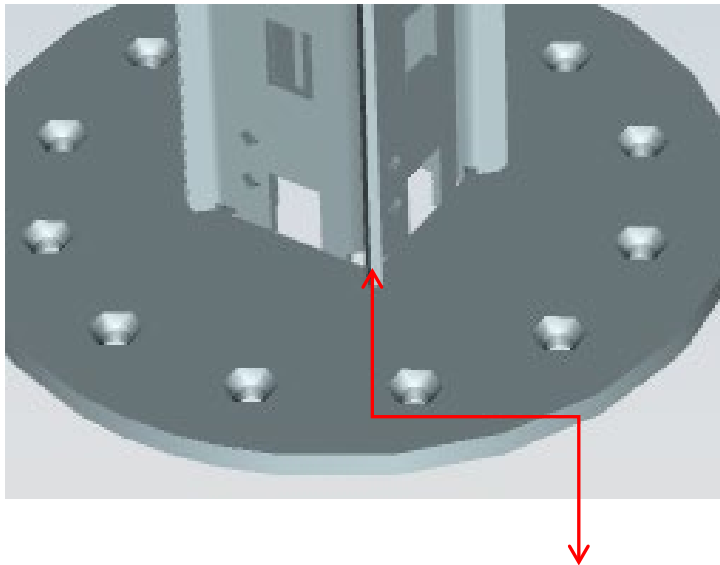
After the assessment and evaluation of the structural conditions on-site, the installation must be conducted by a trained professional.



Rotated, the high edge is in the front (see arrow).



Attach the Pillars and Ground Plate



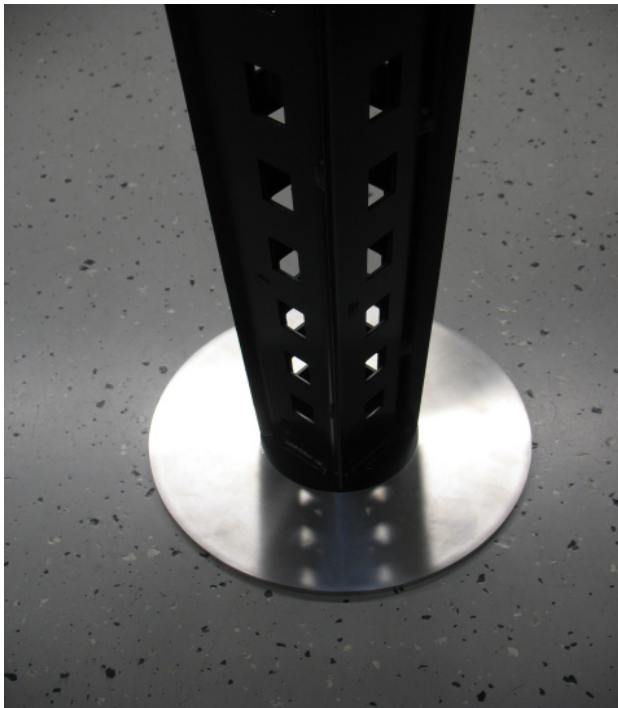
➔ **Attention! The pillars must be positioned with the high edge in front as shown in the figure (select the position based on the planning).**

- Use the base plate as a template in order to make the fastening point. 6 fastening points are required. If reinforced steel is in the way, use the drill hole next to it.
- Create the drill holes and install dowels.



- Fasten the ground plate and pillar with the dowels and screws provided.

- Now connect the stainless steel ring to the base.

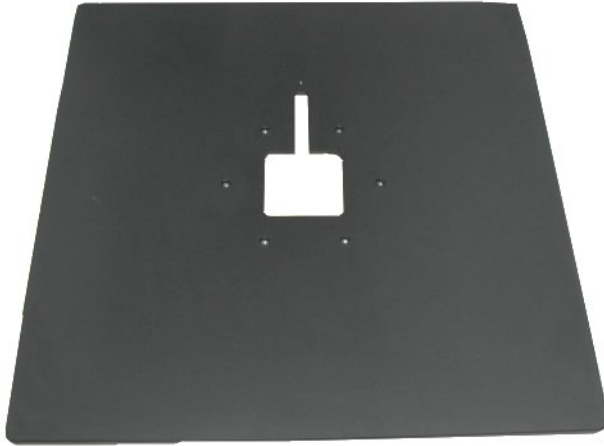


- Then install the stainless steel pipe.



Attach Pillar/Ground Plate to the Floor Plate

Before you attach the ground plate to the floor plate, you must position the power supply cable and the LAN connection over the joint (see photo below) if you are using floor cabling.

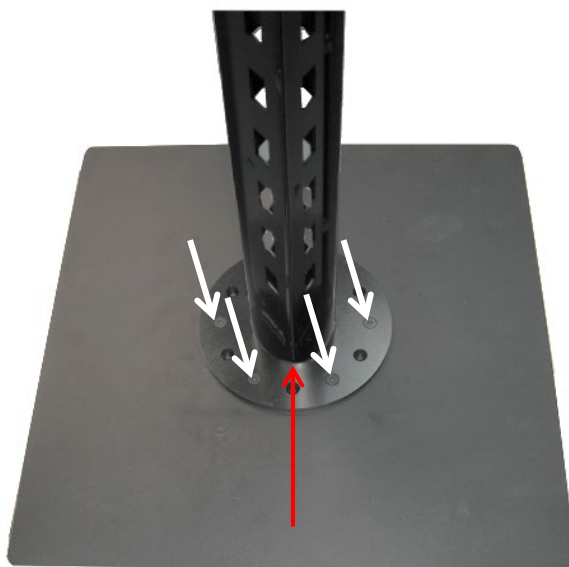


- ➔ Please ensure that the cables are not crushed when positioning the ground plate.
- ➔ Position the wires and cables so that no one can step on them or trip over them.
- ➔ Should the ground be uneven, possibly creating a balance by all-plastic blocks.

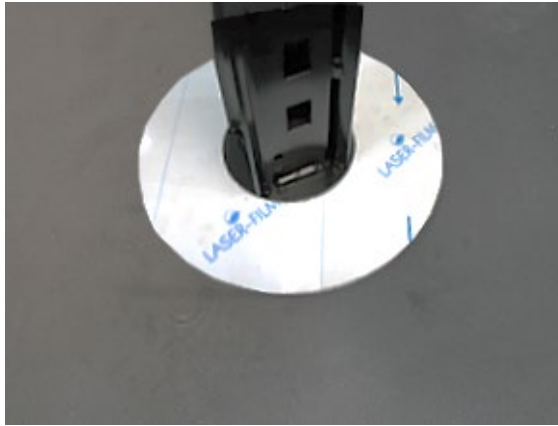
All six fastening points will be needed.

- Attach the ground plate to the floor plate using the screws provided (white arrow), in doing so, use every 2nd hole (4 of the 6 screws are pictured, two fastening points are located behind the pillar).

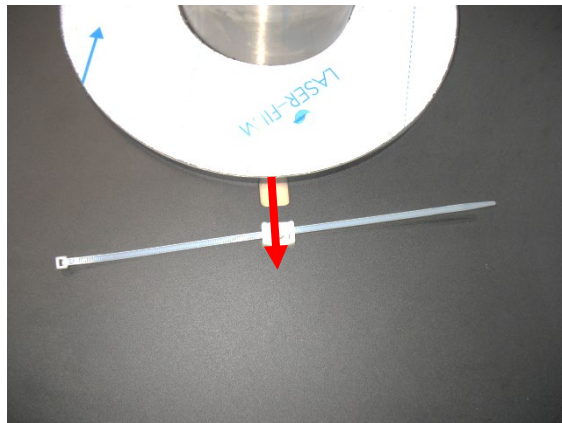
The high edge is located in the front (see red arrow) and the joint in the floor plate points backward.



- Position the stainless steel ring on the ground plate.



- You can enclose both cables with the cable ties.

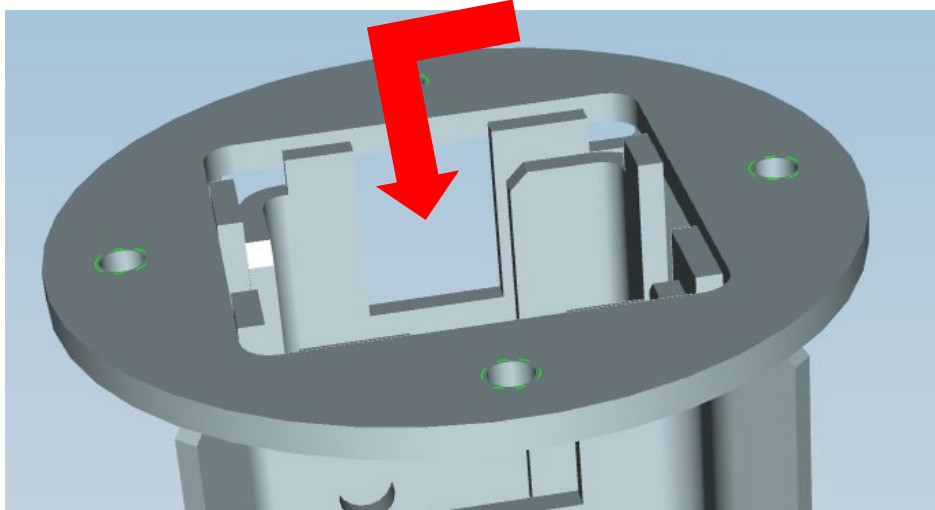


- Then position the stainless steel pipe.



Cable Connections for Floor Cabling

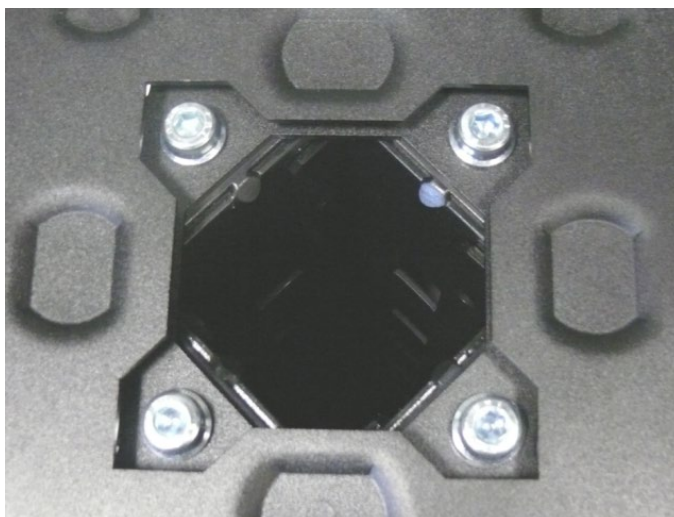
- ➔ See also "Cabling for the North American Market".
- Pull the cable connections through the cable outlet before installing the device, bend them by 180° and lower them into the pillar so that the cables are not damaged when positioning the enclosure housing.



- ➔ Always position the wires and cable so that no one can step on them or trip over them.

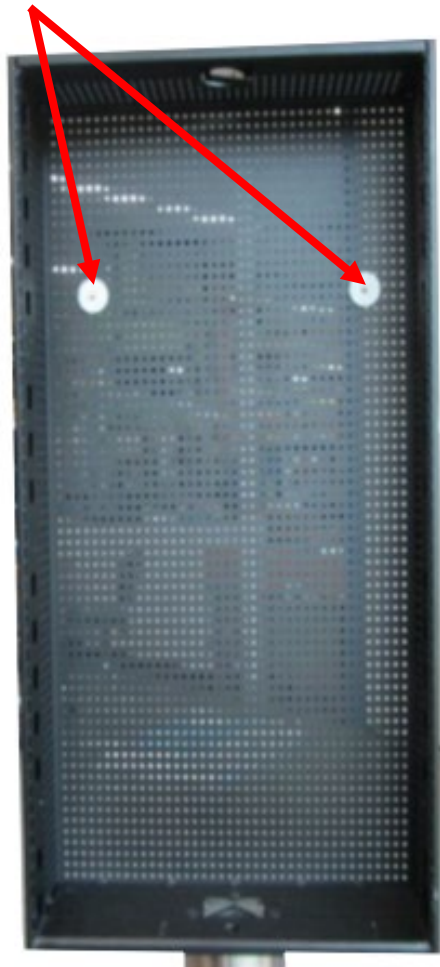
Fastening Points on the Housing

- Position the housing and tighten the screws (M8) provided. The figure shows the top view and the fastening points on the housing.



Attach Kiosk System

- Position 2x plastic distance washers in the housing.



- ➔ **Important note when unpacking the terminal: always lift the terminal out of the box by the housing, not the door!**

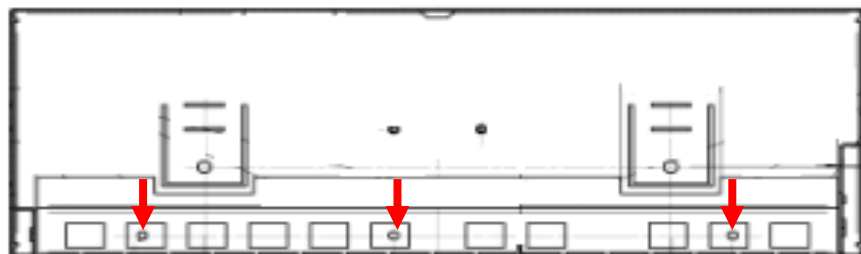
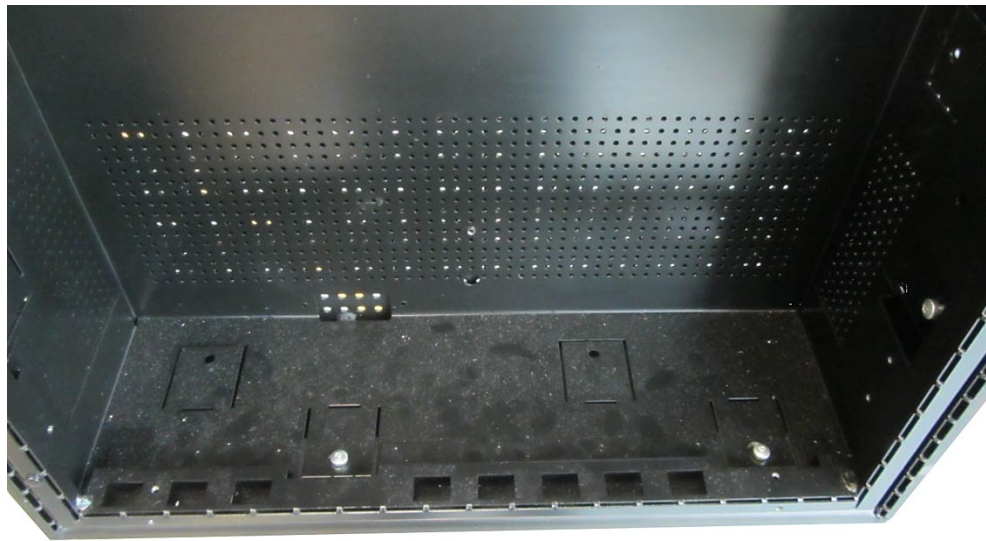
- Place the complete terminal in the housing (see figure).



- Tighten both M6 hexagon serrated flange nuts.



- Fix the terminal into place at the lower edge with the three M4x10 screws.



- ➔ **Attach the body in the enclosure housing so that the outer edges of the body and enclosure housing are flush. Otherwise, there is a risk that the enclosure housing will be damaged by opening the door.**
- After the commission of the device, remove the protective film from the front of the terminal, also remove the protective film from the stainless steel parts and clean them with a damp, lint-free cloth. If fingerprints remain visible, clean the stainless steel surfaces with a foam cleanser for plastic or metal ordered at Wincor Nixdorf.

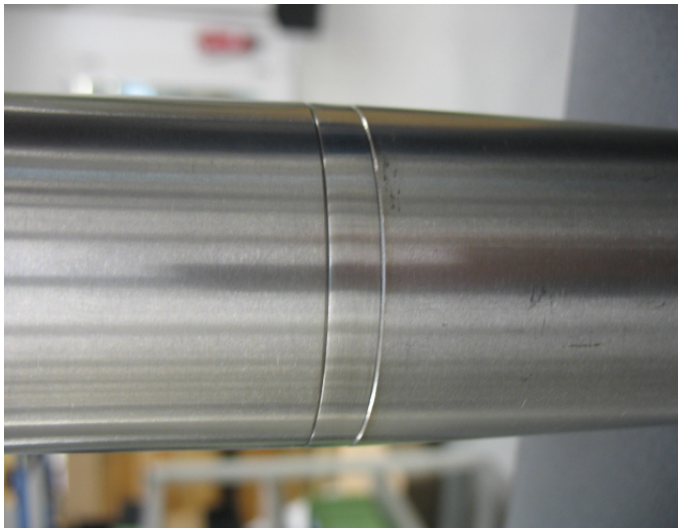
Attach Cable Duct

The drill hole for the ceiling installation should be between 50 mm (minimum) and 60 mm (maximum) so that all damage to the ceiling surface will be covered.

- ➔ **Important: before inserting the device into the enclosure housing, attach the pipe adapter using the screws provided to the enclosure housing so that the side drill holes face backward.**

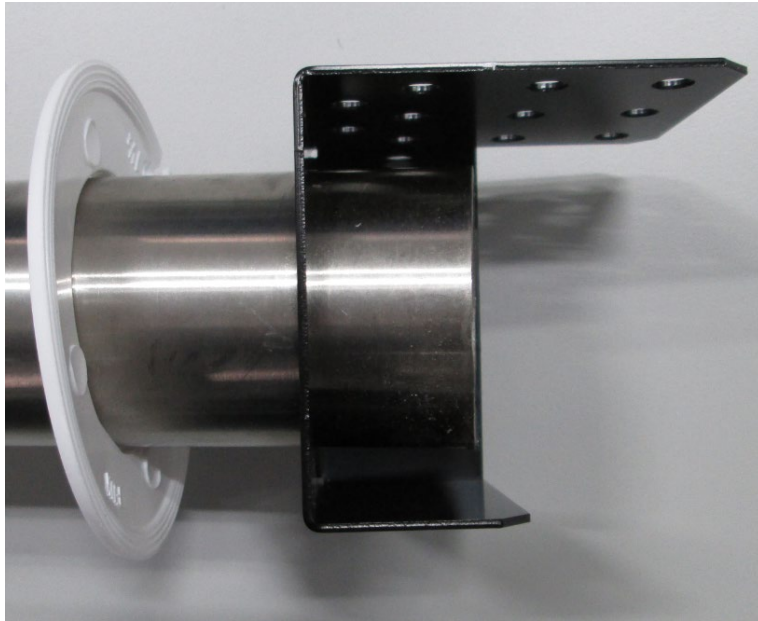


- Connection point of both pipes from above. Each pipe is approx. 1,200 mm long. If that is not sufficient, an additional construction set must be used.



- Before inserting the pipe into the adapter, apply some of the silicon glue provided to the pipe ends.
- Now insert the adapter into the pipes using rotating movements. If excess silicon comes out at the edges, remove it before it can dry.

- Now the stainless steel pipe for the LAN cable and power cable must be inserted into the top opening. It can be necessary to work this pipe into the ceiling and shorten it.

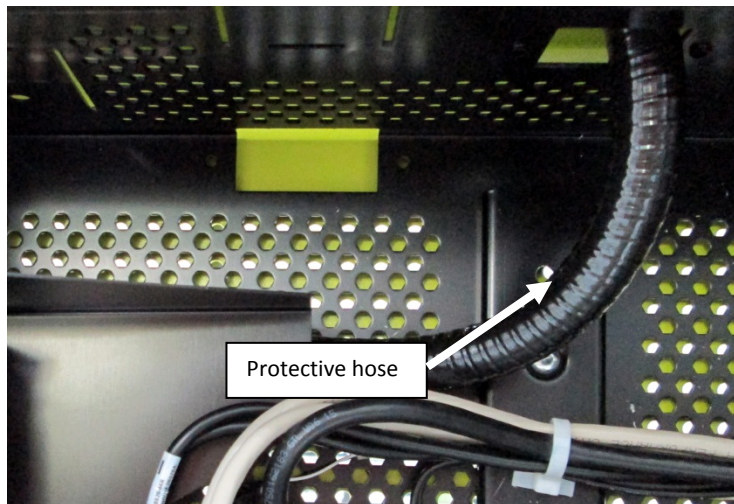


Due to safety reasons, the attachment of the retaining bracket to the ceiling is a mandatory requirement. The corresponding attachment holes are present in the retaining bracket. Additional attachment material must be procured on-site.

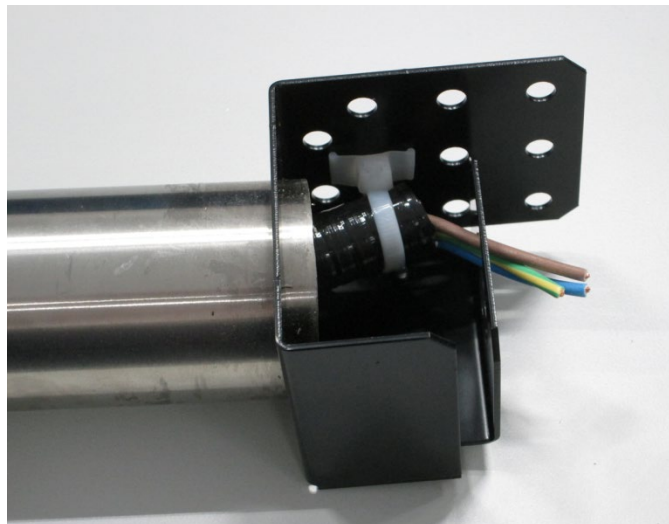
Ceiling Cabling

Cabling for the North American Market

- Attach the protective pipe coming from the in-house installation to the landing plate.
- Insert the power supply cable coming out of the ceiling to the protective hose included in the delivery and thread it through.
- Lead the protective hose through the ceiling duct into the housing of the W1000 and position it to the fixed connection box.



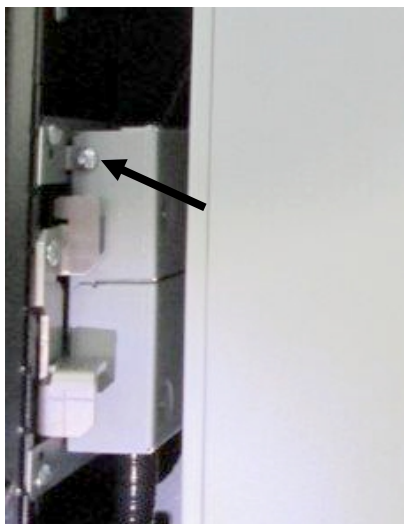
- Secure the protective hose to the landing plate with a cable tie.



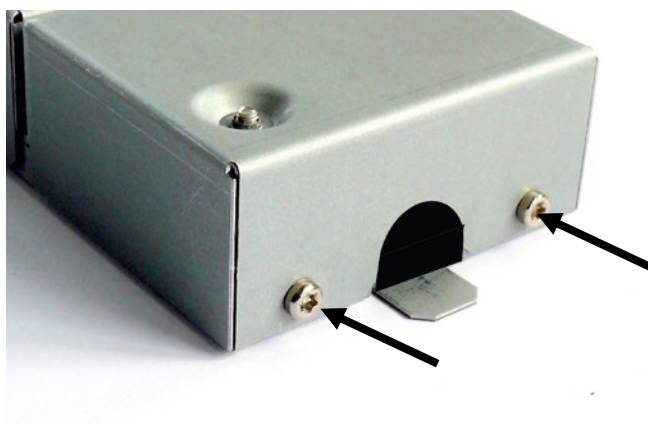
- Pull the plug on the fixed connection box.



- Loosen the screw (see arrow) and pull the fixed connection box out of the holder from above.

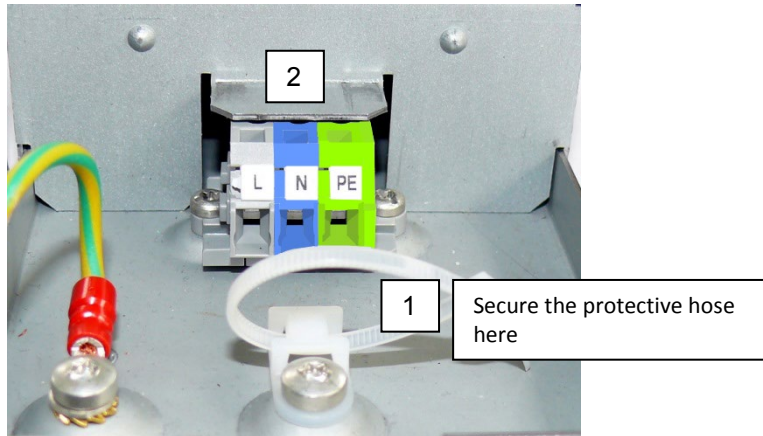


- Remove both screws (see arrow) and carefully remove the cover.



- Secure the protective hose with a cable tie (1).
- Insert the litz wires in accordance with the markings (2).

Insulation length 8-9 mm (0.3 inches), cross-section 0.75 mm - 2.5 mm (AWG 18-14) litz wire or cable

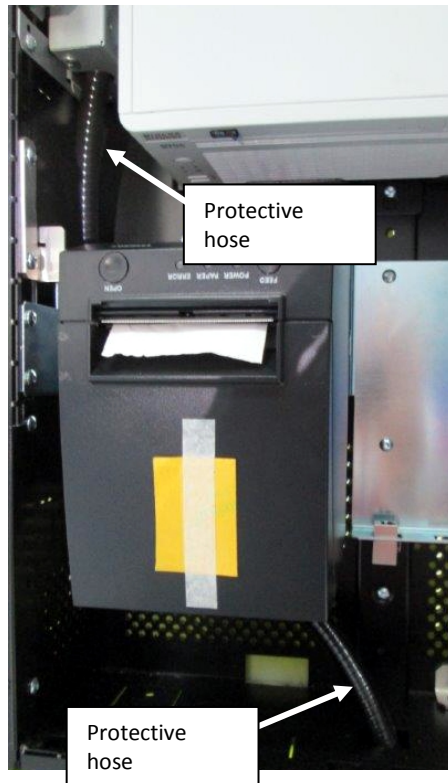


Conduit landing plate supports the conduit trade size $\frac{1}{2}$ (0.875 in)

- Install the fixed connection box in the reverse order.

Cabling from Below Through the Standing Pillar

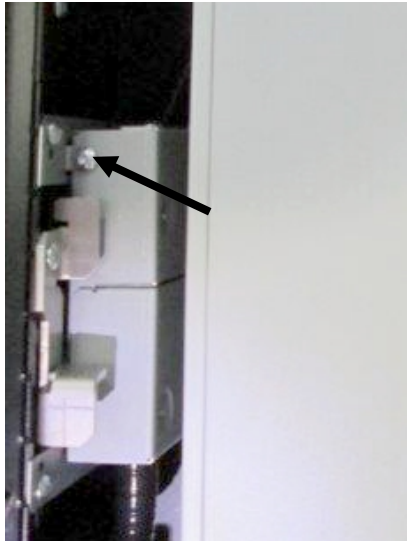
- Insert the power supply cable coming out of the floor into the protective hose provided and thread it through.
- Guide the protective house through the standing pillar into the housing of the W1000 and position it to the fixed connection box.



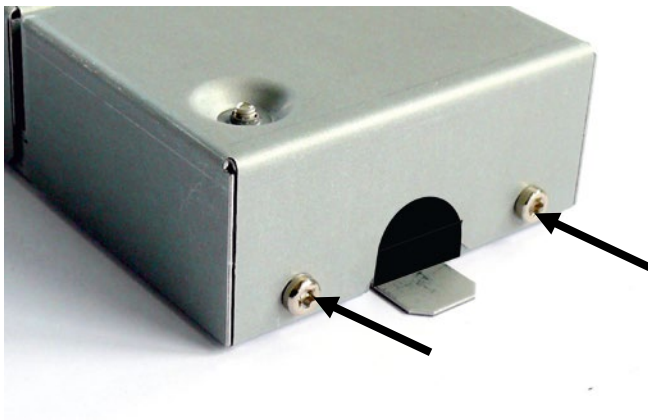
- Pull the plug on the fixed connection box.



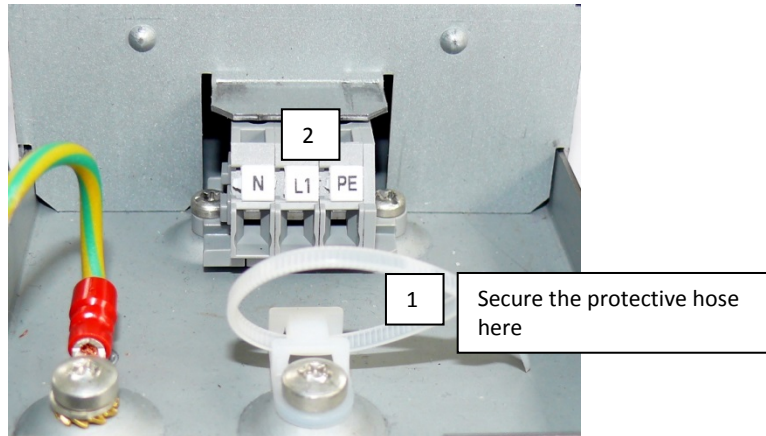
- Remove the screw (see arrow) and pull the fixed connection box out of the holder from above.



- Remove both screws (see arrow) and carefully remove the cover.



- Secure the protective hose with a cable tie (1).
- Insert the litz wires in accordance with the markings (2).



- Install the fixed connection box by proceeding in the reverse order.

Depiction with cable duct and without in the front view

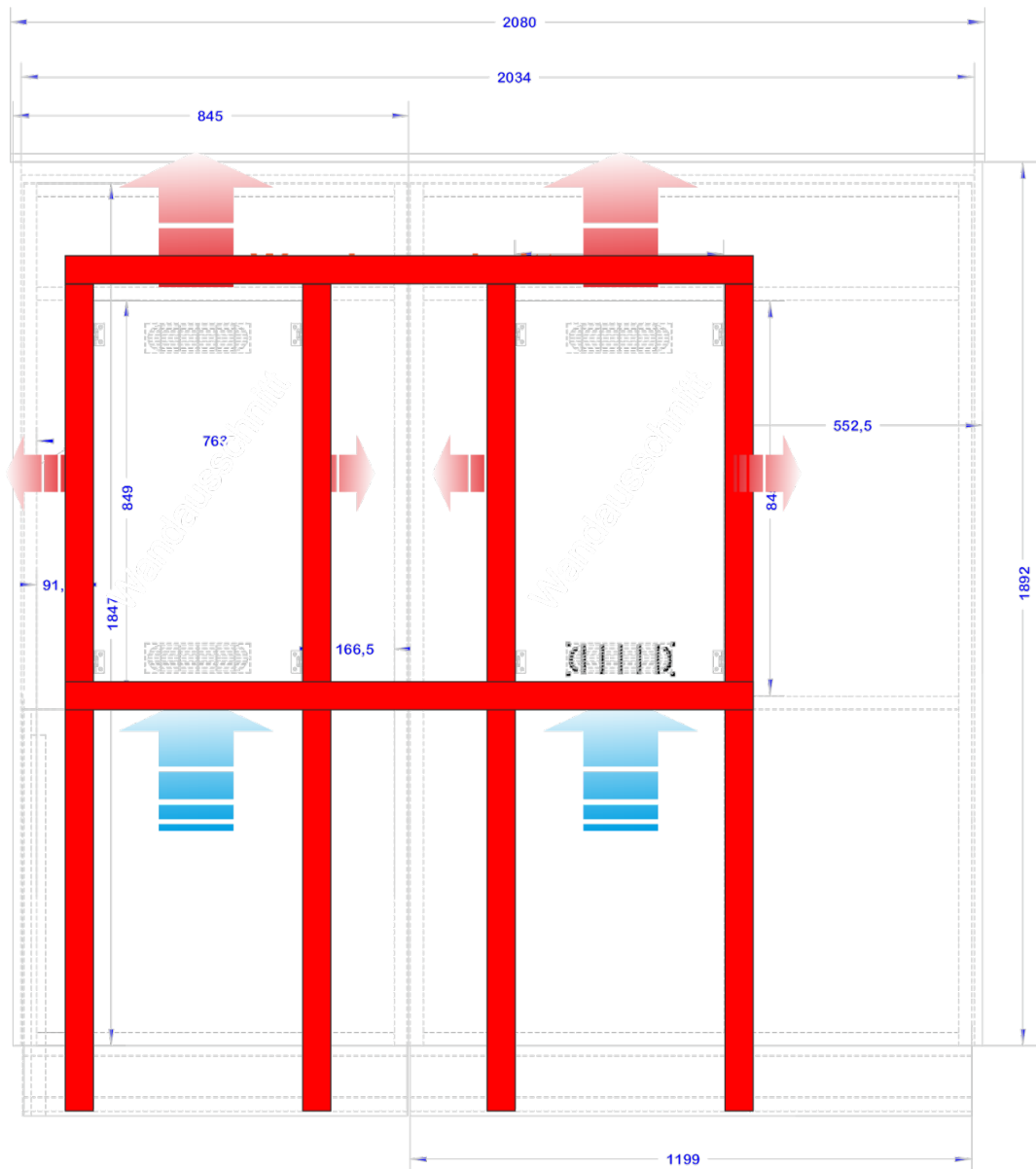


Wall Mounting

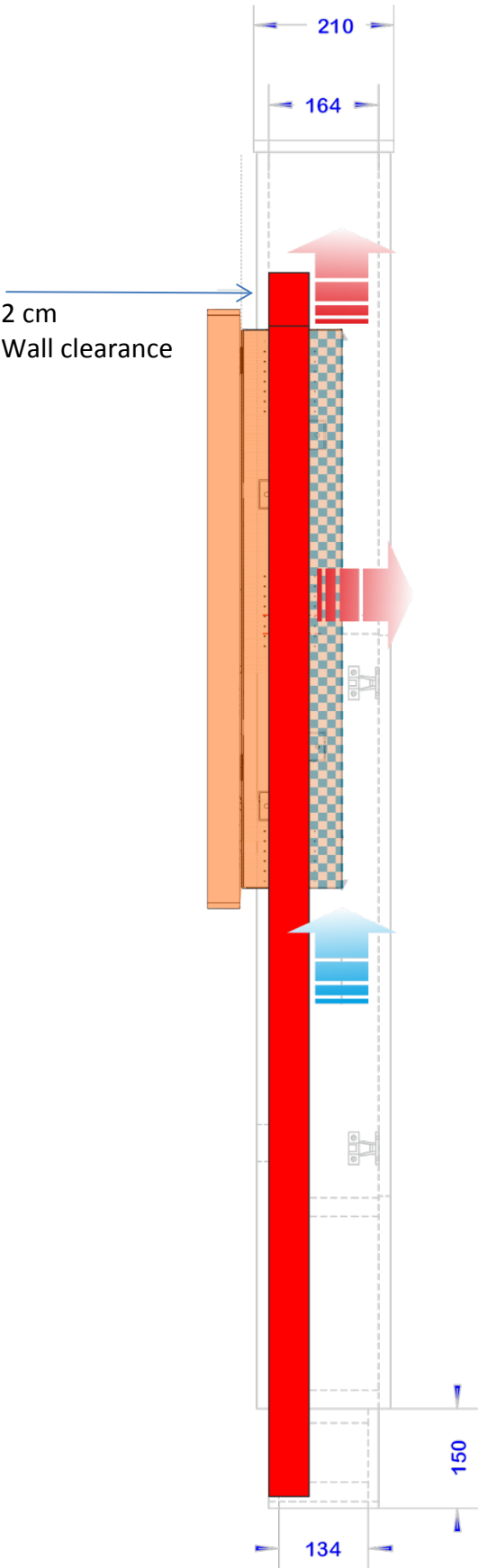
After the assessment and evaluation of the structural conditions on-site, the installation must be conducted by a trained professional.

Assembly in the Wall

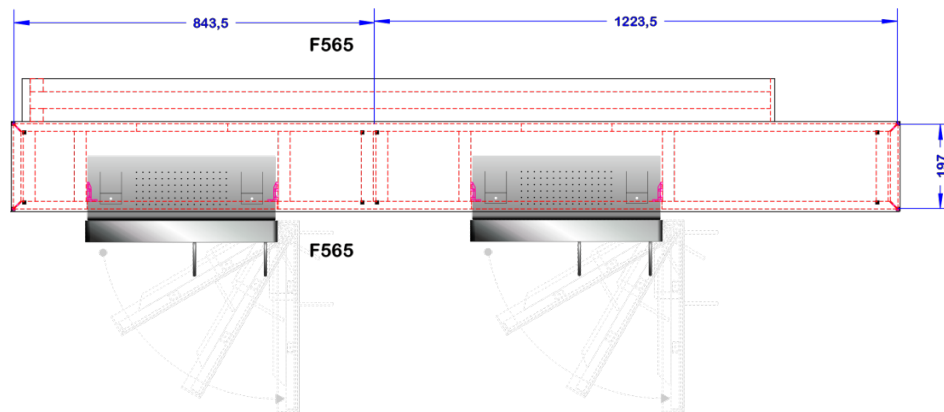
Dimensions



Side view

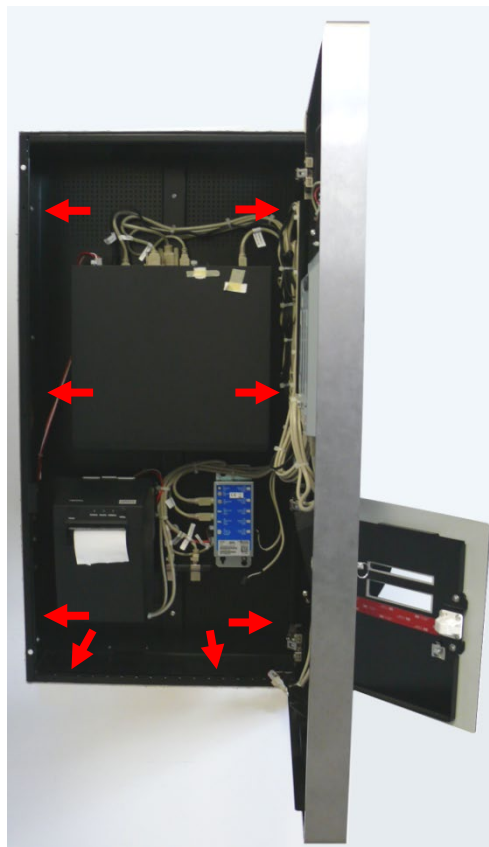


Supervision

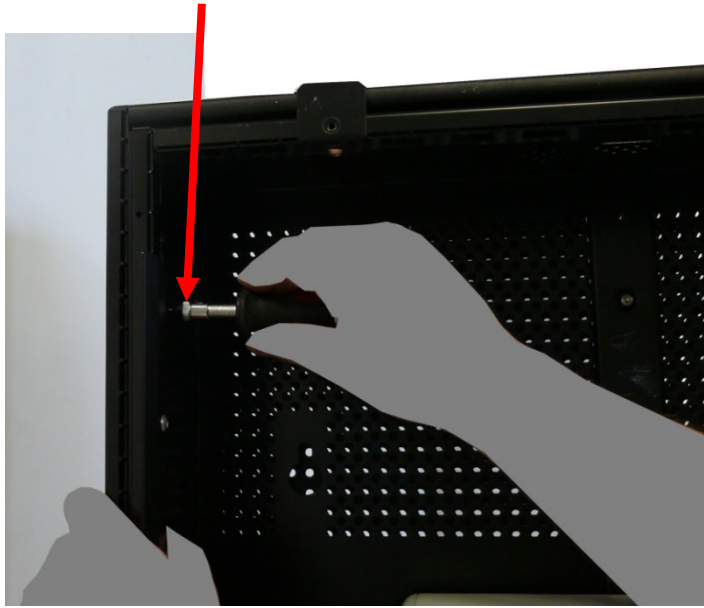


Installation

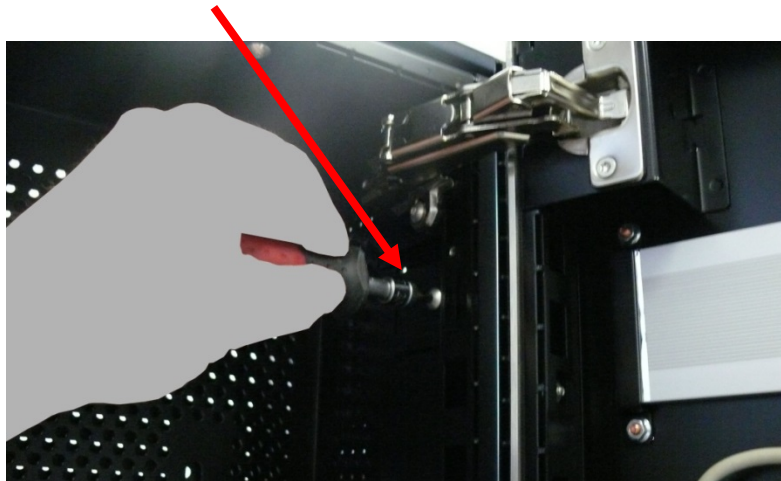
- Remove the device from the packaging and hold it by the housing. Place the device upright on an even surface.
- Lift the device into the wood construction on the wall.
- Guide the power cable and the data cable to the lower side of the inside of the housing.
- Attach the terminal on the left and right sides and from below. 8 fastening options are provided. 6 screws are provided and can be used as needed. You can fix the terminal into position using the corresponding drill holes as shown in the photo.



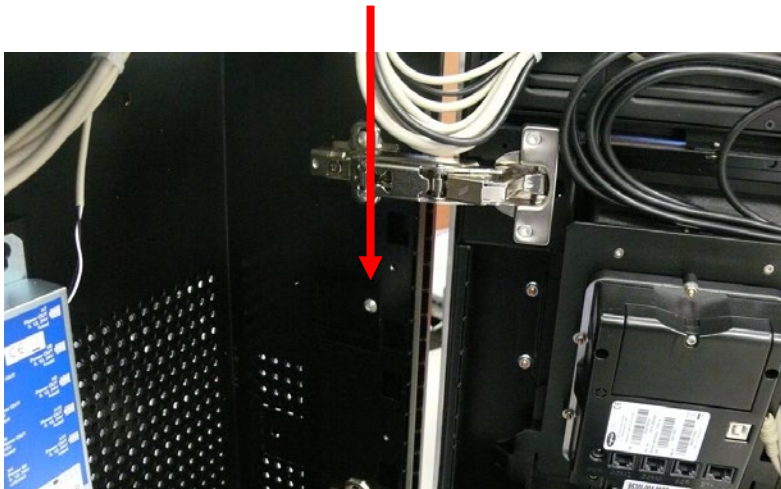
Left side M4 x10, top.



Right side M4 x 10, top



Fasten in the middle on both sides.



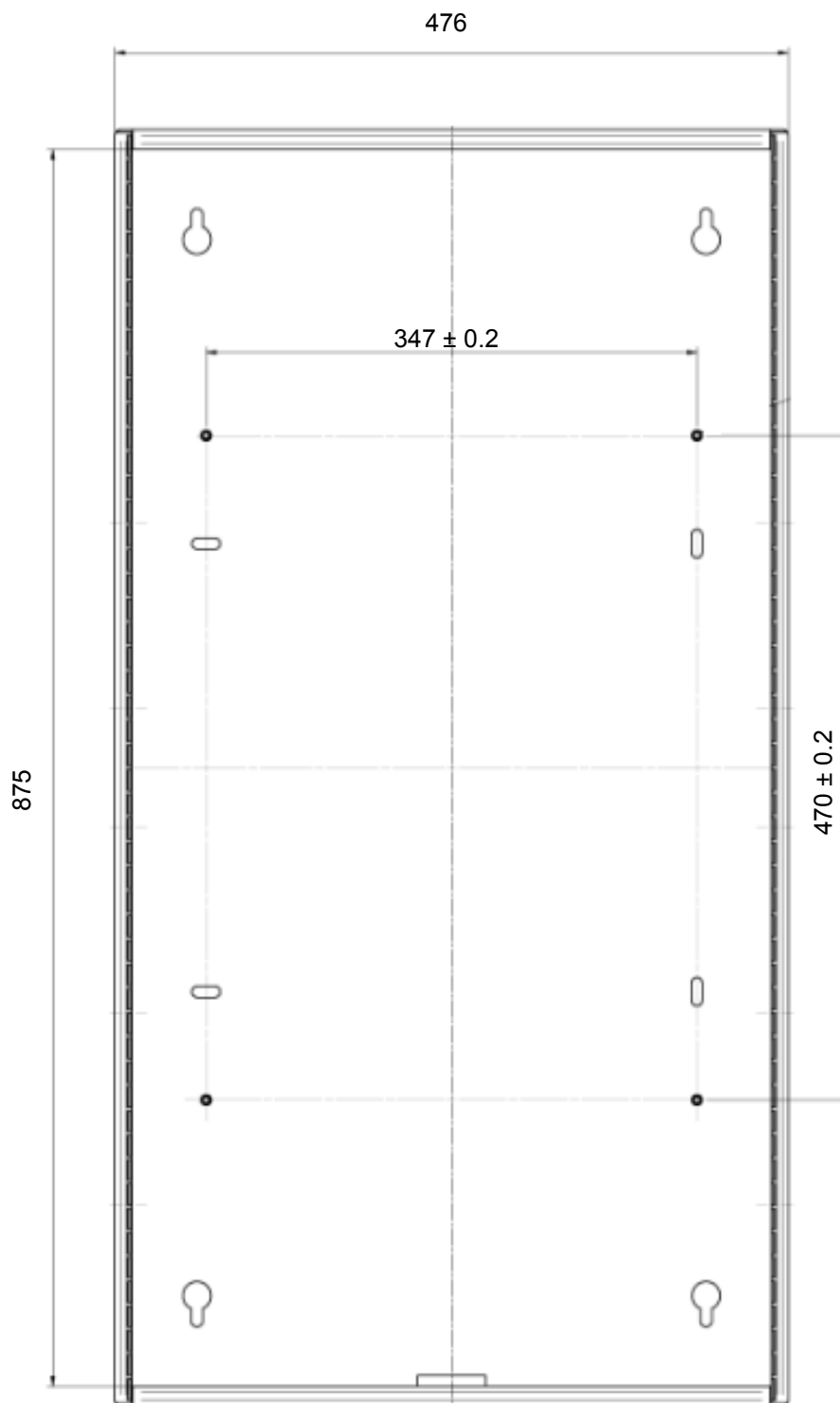
Attach from below on both sides or fasten on the bottom (white arrow).



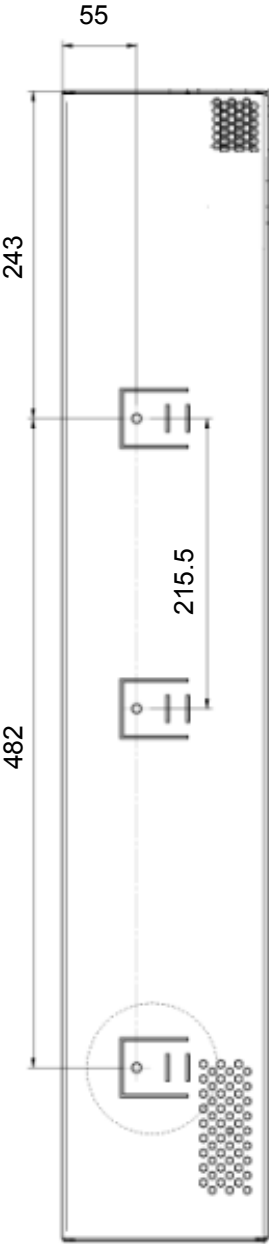
- Close the door and remove the film from the frame and the surface of the door.

Assembly on the Wall

Dimensions (in mm)

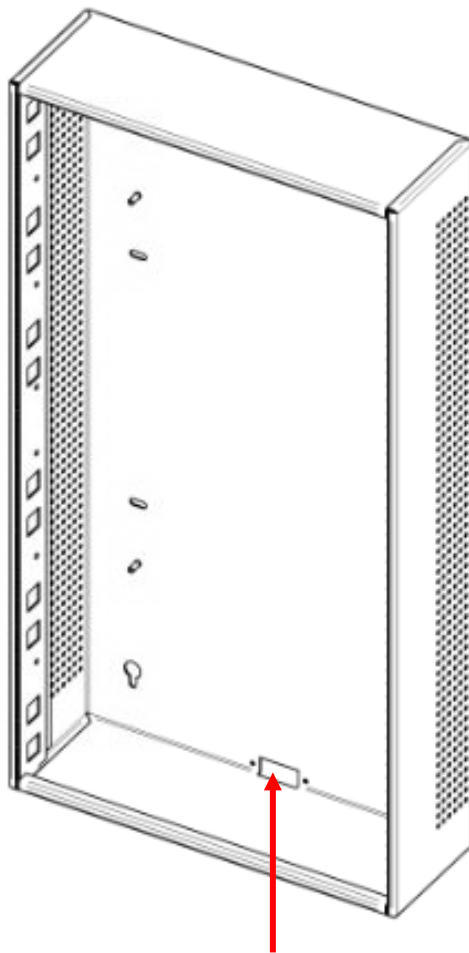


Side (left, in mm)



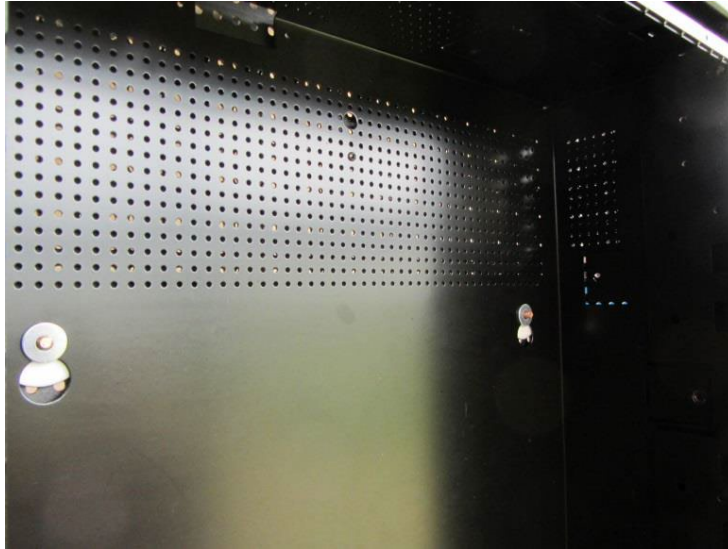
Installation

- Mark the 4 drill holes on the wall (see figure Dimensions).
- Drill the holes and insert a corresponding dowel in each (max. diameter of the screws: 8 mm).
- Insert two screws into the top drill holes and tighten them with a clearance of 8 mm on the wall.
- Place the two plastic distance washers on the housing.
- Hang the housing on the wall through the two keyholes on both screws. Fix the two lower screws into position. Tighten all four screws. The housing can be hung on the wall rotated by 180° so that the cable duct is on top. The cable duct is on the bottom in the figure.

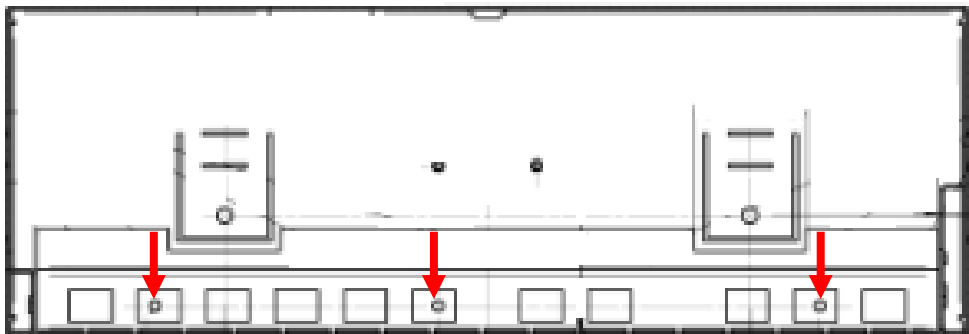
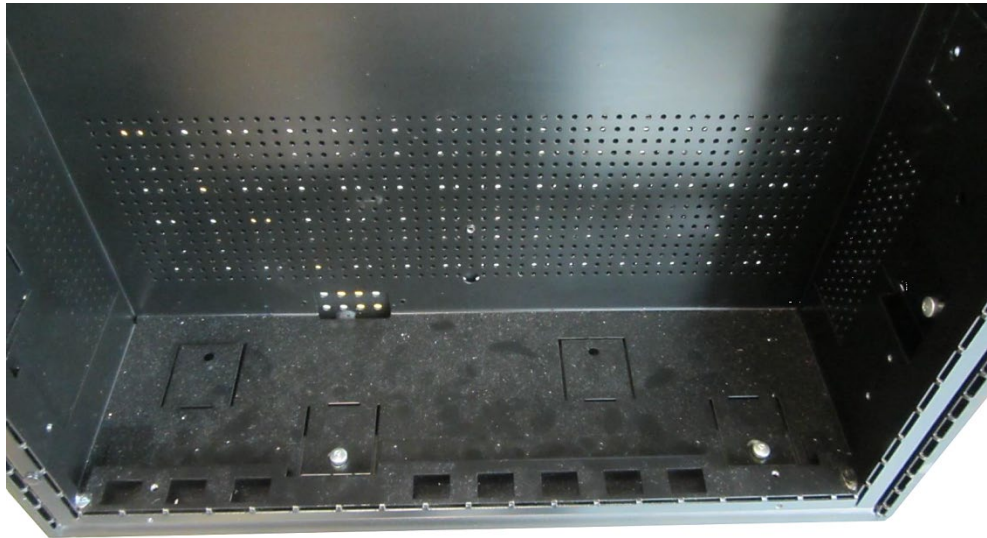


Cable duct

- Remove the device from its packaging and hold it by the housing, not the door. Place the device upright on an even surface.
- Lift the terminal into the housing on the wall.
- Guide the power cable and the data cable to the bottom and/or top side into the inside of the terminal.
- Attach the kiosk system using 2 M6.



- Attach the terminal below using 3 M4x10.

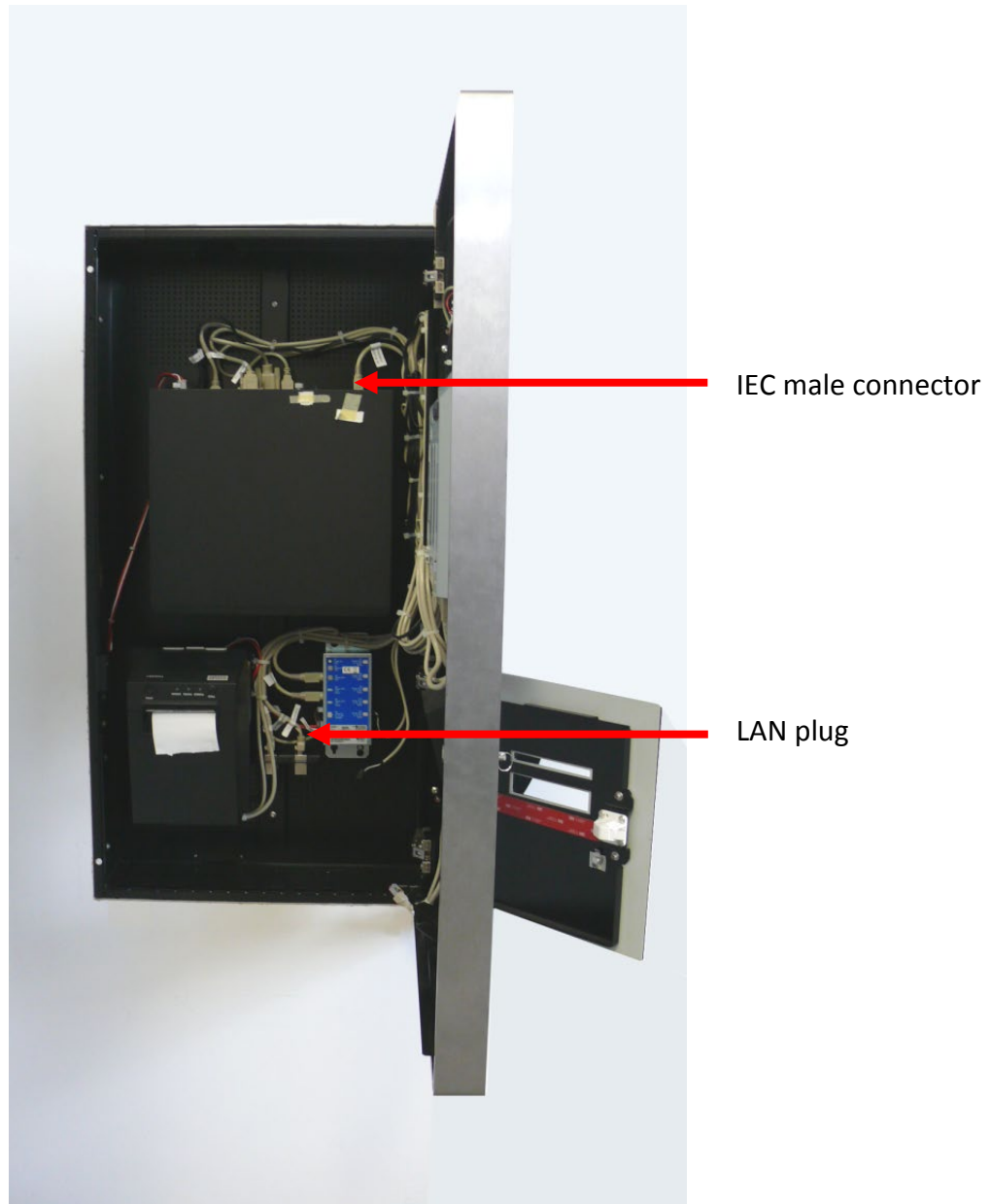


Attach the body in the enclosure housing so that the outer edges of the body and enclosure housing are flush. Otherwise, there is a risk that the enclosure housing will be damaged by opening the door.

- Close the door and remove the film from the frame and the surface of the door.

Cabling Europe

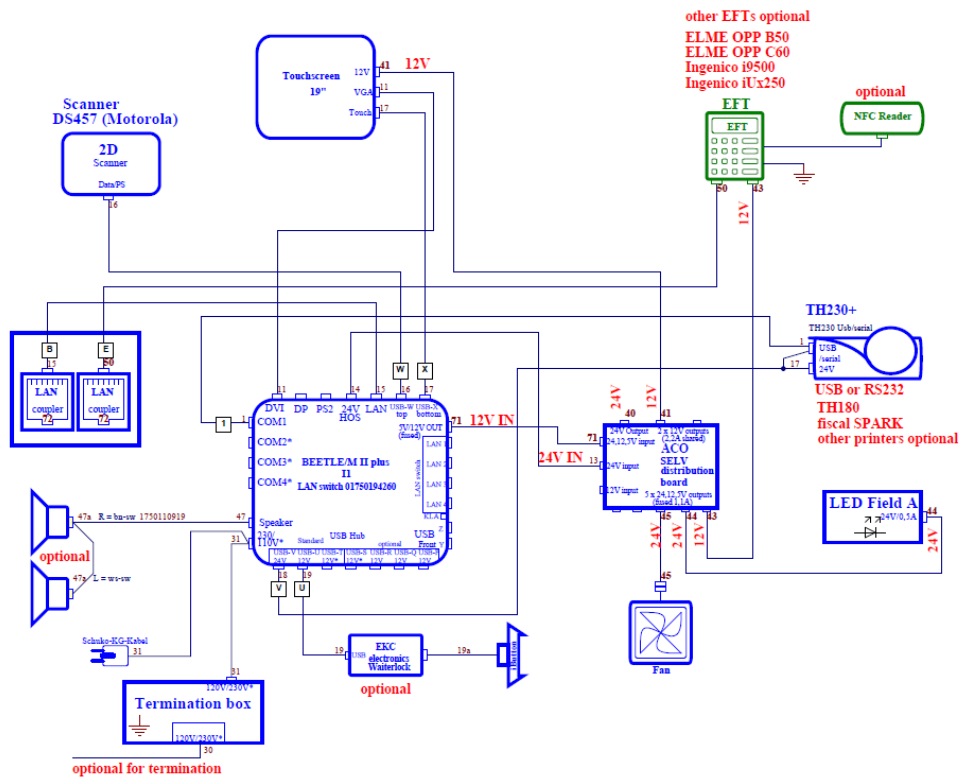
- Once the cables are positioned on the inside of the terminal, connect the IEC male connector with the socket on the back of the BEETLE system and the LAN plug with the LAN socket.



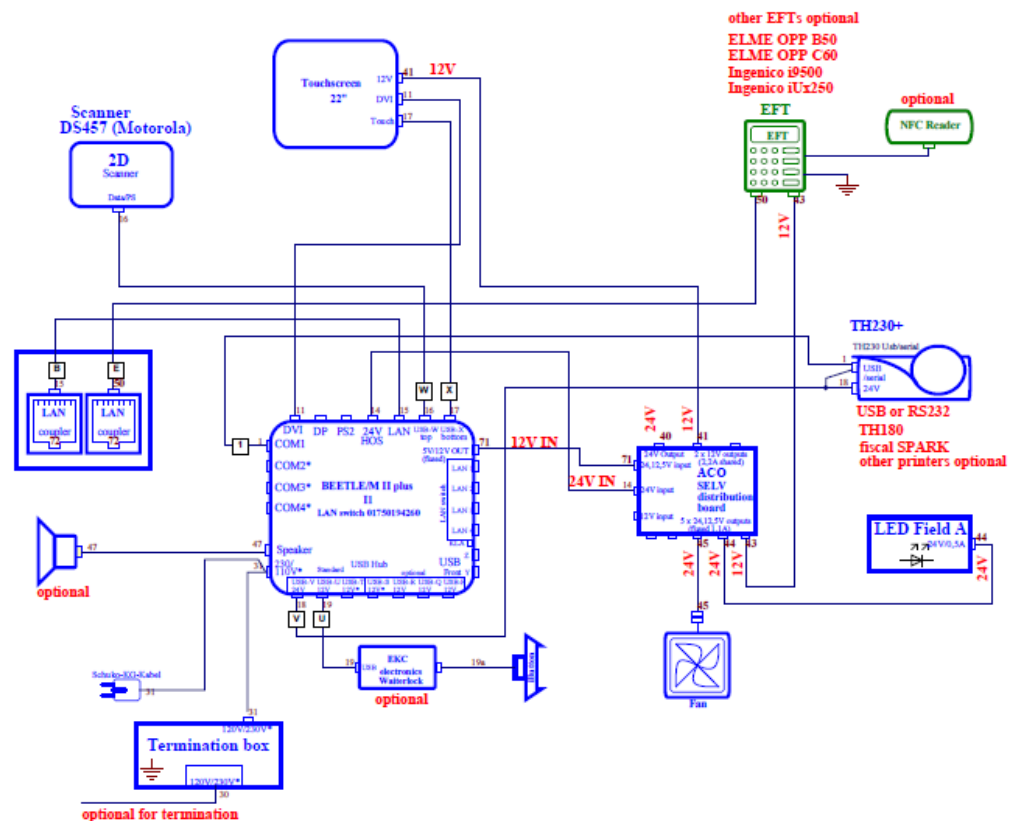
- Make all required cable connections, including the power supply to the IEC male connector.
- Turn on the monitor and the BEETLE system.
- Close the terminal door.

Block Diagram

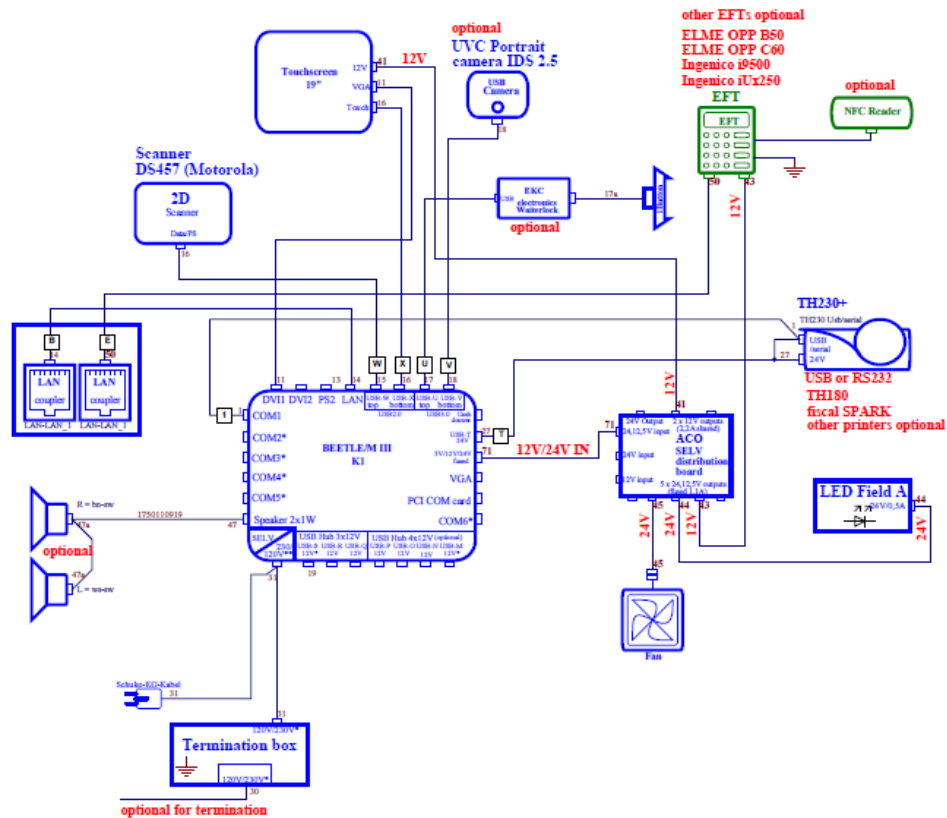
BEETLE /M II plus with 19" display



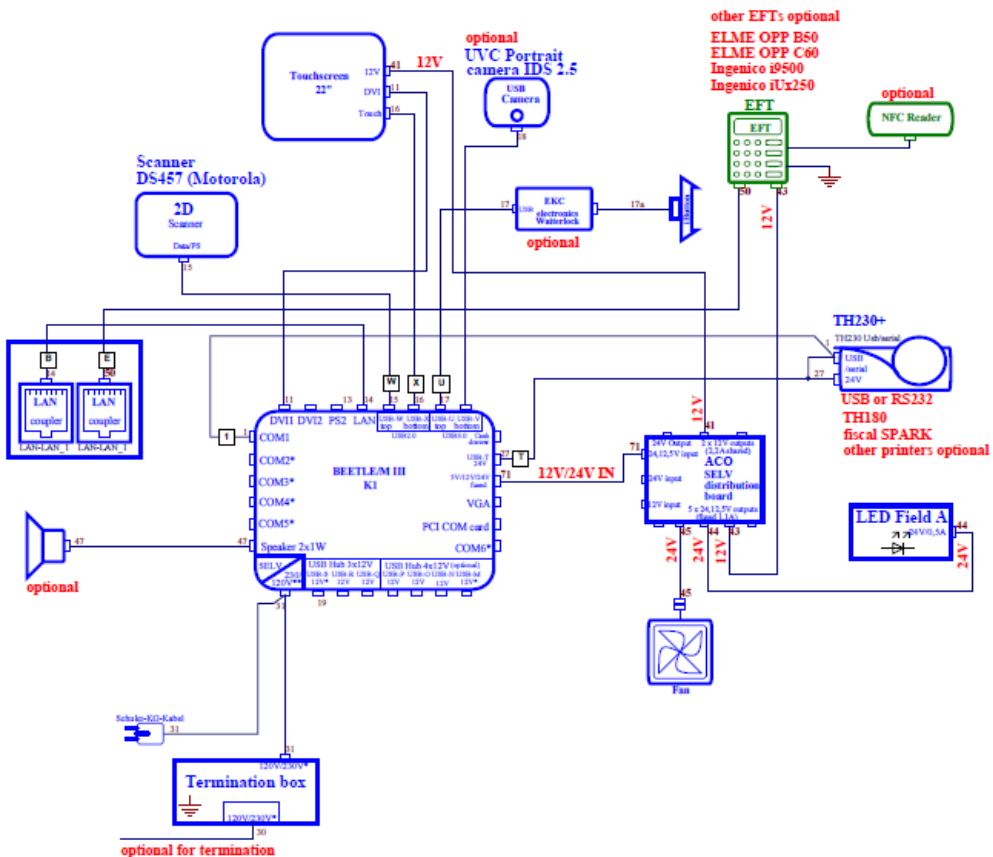
BEETLE /M II plus with 22" display



BEETLE /M III with 19" display



BEETLE /M III with 22" display



Wincor Nixdorf International GmbH, 2015

Order number: **01750275744A**